

Isolated left ventricular apical hypoplasia (ILVAH) is a rare congenital cardiac abnormality, which might result in severe symptomatic heart failure with pulmonary hypertension, atrial fibrillation or malignant tachycardia in adults. Here we [reported a case](#) of a combination of ILVAH and LV myocardium noncompaction which manifested as symptomatic biventricular heart failure and persistent atrial fibrillation. The first worldwide experience of use an active surgical strategy leads to the restoration of sinus rhythm, prevention of arrhythmias, the enhancement of myocardial contractility and, therefore, improvement of clinical manifestation of heart failure.

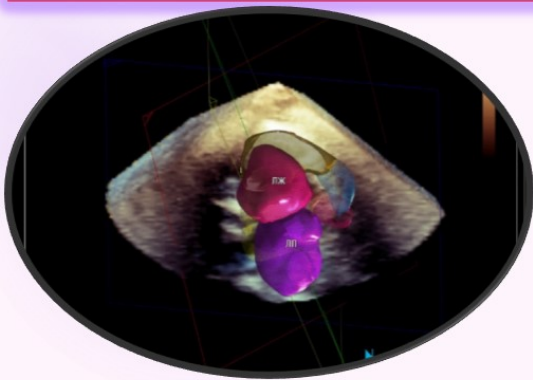
[This case was presented in the part of HIT Clinical Case Poster session at the EuroEcho 2018 Congress](#)

European Heart Journal - Cardiovascular Imaging

, Volume 20, Issue Supplement_1, 1 January 2019, Pages i46–i83,

<https://doi.org/10.1093/ehjci/jez262>

Cardiac Imaging in the diagnosis and
treatment of patients with Isolated Left
Ventricular Apical Hypoplasia
V. Skidan, E. Pavlyukova, G. Nartsissova



V. SKIDAN, MD, PHD
FEDERAL CENTER OF
CARDIOVASCULAR SURGERY,
Khabarovsk

[Cardiac Imaging in the diagnosis and treatment of patients with Isolated Left Ventricular Apical Hypoplasia](#)